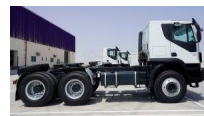




**Iveco Trakker Head 6x4, GCW 130 Ton HP 420,
Sleeper Cabin w/ Hub Reduction MY21 Tractor Head
TRACTORHEAD Diesel 2021**

Car Code: IAH4221 - 130 Ton, 6x4 (AT720T42TH)



SPECIFICATIONS

Type	AT720T42T H
Axle Configuration	6X4
GCW	130 Ton
Cab Type	Sleep Cabin
Engine Power	420 E3
Gear Box Type	Manual Gearbox 16 SP
Fifth Wheel	Jost Fifth Wheel - 3 1/2 + Moun. Plate
Wheelbase	3,500 mm
Front Axle	9 Ton
Rear Axle	32 Ton
Vehicle Suspension Type	Mechanical Suspensions
Brake Type	Drum Brakes (Front/Rear)
Tyres	12.00R24
Colour	50105- White IC 194
Drive Hand	LH Drive
Dimension	7.15 x 2.55 x 3.10 mm
Ground Clearance	310 mm
Capacity Liters	12,88
Emission	E3

STANDARD OPTIONS

VIN Code check digit	220 AH Batteries
7+7 Pin Trailer Plus	530L Steel Fuel Tank
Manual Air Conditioning	External Sun Visor
Rear Dampers	630CC air compressor
Disk Wheel 24-8.5 for tyres 12.00R24	ABS, Cruise Control
Safety Hor. Filter cartridge	Horizontal air filter
Standard Air intake	Standar Airtank plating
Max Power(Hp/Kw)@Rpm-420/309, 1500-1900	Max Torque (Nm/Mkg) 1900/1941900-1500
Steel Air tank	90A Alternator
Pollen filter	Cylinders In Line -6
Mechanical Cab Suspension	Manual Cab Tilt
AT-MY Low roof cab	STD temp climate
Tinted Windows	Standard Radiator
Fabric Air Susp Driver Seat	Side Exhaust
Eng Speed 1900 rpm	5th w EC position
Steel front bumper	Front anti-roll bar

32T reinf real multi leaf susp.	Rear anti roll bar
Front parabolic suspension	Fuel prefilter not heated
ZF 16S 2220 to Gbox	Headrest
Electric Horn	Fabric interior trim
Jacking Equipment	STD rear overhang
Expansion Module	Low Air warning buzzer
Manual Battery Cut Out	Manual Emea-Apac
Mirrors 2003/97/CE	Mirror arms 240mm
Standard Muffler	Electric Windows
STD GVW equipment	Del PTO connection preparation
Cross Axle Differential Lock	Radiator Guard
Provision Radio and CB	Rear Suspension No Spacer
Rear Axle ratio 5.01	Rear across member
Rear Mudguard	Speed Limiter 90Km/H