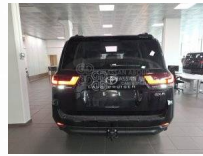




TOYOTA LAND CRUISER 4.0L PETROL, GXR, A/T,MY24

4.0L NEW Petrol 2024

Car Code: EVU04



ENGINE & TRANSMISSION

Engine	4.0L, PETROL
Transmission	6 A/T
Terrain	4x4 FULL-TIME
Max Output	270 HP / 5600 RPM
Max Torque	385 NM / 4400 RPM

DIMENSION, CAPACITIES & SUSPENSIONS

Tyre Size	265/55R20
Seating Capacity	7
Number of Doors	5
Dimensions(mm)	L 4985x W 1980 x H 1890
Gross Vehicle Weight	3120 (Kg)
Fuel Tank	110 Liter

INTERIOR FEATURES & SAFETY

AUTO AIR CONDITIONING	DAYTIME RUNNING LIGHT SYSTEM - LED
STEERING WHEEL CONTROL FOR AUDIO/TELEPHONE	HEATER CONTROL PANEL AUTO - 2 ZONE
LIGHT CONTROL SYSTEM WITH 3P	BRAKE ASSIST (BA)
POWER STEERING - HPS	ANTI THEFT SYSTEM - IMMOBILIZER WITH SECURITY HORN
FRONT SEAT POWER - WITH SEPARATE SEAT	COOL BOX
PUSH START BUTTON	ABS
WIRELESS DEVICE SUPPORT - BLUETOOTH & WIFI	CRUISE CONTROL
AUDIO - DA 6 SPEAKER (9 INCH)	LEATHER STEERING WHEEL
OUTSIDE REAR VIEW MIRROR	FRONT SEAT (D + P) - POWER ADJUSTER
BACK MONITOR - ONLY CAMERA	TYRE INFLATION PRESSURE WARNING
GLOVE BOX	SEAT MATERIAL - SYNTHETIC LEATHER
REAR DIFFERENTIAL LOCK	POWER WINDOWS
ACTIVE TRACTION CONTROL (ATRC)	CUP HOLDER
MULTI INFORMATION DISPLAY	WIRELESS CHARGER
VEHICLE STABILITY CONTROL	DUAL FRONT AIRBAGS/SIDES/CURTAIN/KNEE
HILL STARTING ASSIST SYSTEM	

EXTERIOR FEATURES

SUNROOF	TOWING HITCH WITH PINTLE HOOK
WIRELESS DOOR LOCK	SMART KEYLESS ENTRY
REAR GLASS - GRAY PRIVACY TEMPERED	REAR COMBINATION LAMP
REAR FOG LAMPS	ROOF RAIL
BACK DOOR - AUTO	HIGH MOUNT STOP LAMP

