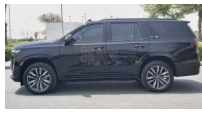




## CADILLAC ESCALADE 6.2L SPORT PLATINUM PETROL, BENCH SEATS, A/T MY22

6.2L Petrol 2022

Car Code: CES8792



### ENGINE & TRANSMISSION

ENGINE	6.2L V8 ENGINE WITH DYNAMIC FUEL MANAGEMENT
OUTPUT (hp)	420/4100
TORQUE (NM/RPM)	624 Nm @ 4100
TRANSMISSION	10 SPEED AUTOMATIC ELECTRONICALLY CONTROLLED TRANSMISSION

### INTERIOR FEATURES & SAFETY

ADAPTIVE REMOTE START	CURVED OLED DISPLAY, INCLUDES 7.2" DIAGONAL CONTROL PANEL
ELECTRONIC LIMITED SLIP DIFFERENTIAL	14.2" DIAGONAL CLUSTER DISPLAY AND 16.9" DIAGONAL SCREEN
AUTOMATIC SEAT BELT TIGHTENING	CADILLAC USER EXPERIENCE WITH EMBEDDED NAVIGATION, AM/FM
SEMI ANILINE LEATHER SEATS ; 18 WAY ADJUSTABLE WITH FRONT	TRI-ZONE CLIMATE CONTROL SYSTEM
BENCH SEATS	WIRELESS PHONE CHARGING
DOORS - SOFT CLOSE/CLINCHING FRONT & REAR	REAR SEAT ENTERTAINMENT SYSTEM
STEREO, NATURAL VOICE RECOGNITION (ENGLISH ONLY),	NEAR FIELD COMMUNICATION (NFC)
WIRELESS APPLE CARPLAY/ANDROID AUTO CAPABILITY,	BLUETOOTH® CONNECTIVITY, 8 USB PORTS (6 USB-C)
PLATINUM INTERIOR TRIM ,LEATHER WRAPPED INSTRUMENT PANEL	AUGMENTED REALITY NAVIGATION
HD SURROUND VISION	AKG STUDIO 36-SPEAKER SYSTEM
DRIVE ASSIST TECH PACKAGE	CONVERSATION ENHANCEMENT (FRONT TO REAR)
HEAD UP DISPLAY (full-color, reconfigurable Selectable interior colored lighting, ambient and task)	AUTOMATIC EMERGENCY BRAKING

### EXTERIOR FEATURES

22-INCH 12-SPOKE ALLOY WHEELS POLISHED WITH DARK ANDROID FINISH	MOLDING - GLOSS BLADE BODY SIDE
ENHANCED AUTOMATIC PARKING ASSIST	REAR CROSS TRAFFICE ALERT
PANAROMIC SUNROOF	STABILITRAK, STABILITY ENHANCEMENT SYSTEM WITH ROLLOVER MITIGATION
FRONT PEDESTRIAN BRAKING	FORWARD COLLISION ALERT
LUGGAGE RACK ROOF MOUNTED GLOSS BLACK	REAR CAMERA MIRROR WITH WASHER
LANE KEEP ASSIST WITH LANE DEPARTURE WARNING	AIR ADAPTIVE RIDE SUSPENSION
ASSIST STEPS, POWER RETRACTABLE WITH PERIMETER LIGHTNING	DOOR HANDLES - BODY COLORED