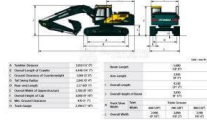




## HYUNDAI HYDRAULIC EXCAVATOR WITH BUCKET 0.87 Cu.M ROCK BUCKET AND OPERATING WEIGHT 22 TONS

### Heavy Equipment Diesel 2020

Car Code: HX220R2



#### ENGINE & TRANSMISSION

Engine	Cummins 6BTAA-5.9, Water cooled, 4 cycle, Diesel, 6 Cylinders in-line, direct injection Turbocharged, Charger air cooled.
Horsepower	SAE Net 145HP @ 2000 RPM

#### DIMENSION, CAPACITIES & SUSPENSIONS

Operating Weight	22 Tons
Boom	5680 mm
Arm	2920 mm
Track Shoe	600 mm Triple Grouser Shoes
Bucket	0.87 Cu.m Rock Bucket front wirenet guard
Attachments	Piping and control for Rock Breaker attachment.Revolving lamp on top of cabin with switch.
Country of Origin	South Korea